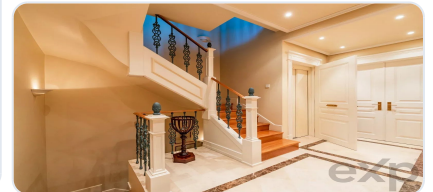


At RealKasa®, our market strategy is focused on discretion, premium presentation, and highly qualified buyer matching. Each property is positioned with a tailored narrative to maximize perceived value and market response.

# The Epitome of Luxury and Security, in the Heart of Lisbon

Ref: 86892654 | Lisboa > Lisboa > Lisboa



€9.800.000

<b>Business type</b>	Sale	<b>Property type</b>	House
<b>Bedrooms</b>	6	<b>Bathrooms</b>	-
<b>Area</b>	660 m2		

# Description

---

A Unique Property of 900m<sup>2</sup>: Where Exclusivity Becomes Invulnerable

The Pinnacle of Urban Exclusivity

In the vibrant heart of Lisbon, where history intersects with cosmopolitan modernity, an unprecedented real estate opportunity arises.

This property is not just a residence; it is a one-of-a-kind collector's item, an entire building designed for those who demand the utmost in prestige, privacy, and above all, security.

Located just 5 minutes from Gulbenkian and the prestigious El Corte Inglés, with privileged access to the motorway network in just 2 minutes, this vertical mansion redefines urban glamour, offering a sanctuary of absolute serenity in the core of the Portuguese capital.

## 1. Impenetrable Security: Your Private Fortress

Security has been elevated to an absolute priority in this construction. More than a protection system, the property has been built as a true invisible fortress.

Micro-pile foundations at 20 meters deep guarantee elite seismic resistance, providing an unshakeable base.

The perimeter is monitored by state-of-the-art CCTV system, both internal and external, complemented by high-security electromagnetic locks, blinds equipped with anti-intrusion claws.

All openings are protected by maximum resistance glass, ensuring your peace of mind and that of your family remain absolutely unchanged in any external circumstance.

## 2. Unparalleled Luxury and Spaciousness

With a private gross area of 900m<sup>2</sup> indoors, the flow of spaces is enhanced by majestic ceiling heights, some exceeding 3 meters, imparting an aura of grandeur to each room.

The residence features 6 bedrooms, all private suites, designed with noble materials, with one dedicated to internal staff.

The 9 bathrooms boast luxury finishes, where natural stone and designer metals blend harmoniously.

For automobile enthusiasts and collectors, the garage is a true gallery: with capacity for 10 vehicles, equipped with a sophisticated air renewal system, ensuring the ideal preservation of your collection.

## 3. Absolute Exclusivity: A Real Estate Collector's Piece

The uniqueness of this property lies in the fact that it is an entire building, guaranteeing total independence and privacy that no luxury apartment can offer.

Vertical circulation is ensured by a private elevator capable of carrying 6 people, connecting all floors with maximum comfort. Outside, the 40m<sup>2</sup> private patio functions as an oasis of light and pure air, allowing you to enjoy Lisbon's mild climate in complete seclusion.

The cellar also houses a wine cellar, the perfect setting for the most exclusive celebration moments among your car collection.

#### 4. Cutting-Edge Technology and Sustainability

Intelligence at the service of comfort is a constant throughout the property.

The latest-generation home automation system allows full control of lighting, climate, and security through intuitive interfaces. Committed to energy efficiency, the residence is equipped with high-yield solar panels.

The garage, beyond its generous size, was designed with advanced technical systems that ensure air quality and operational safety, reflecting rigorous and visionary engineering planning.

#### 5. Comfort and Well-being: The Perfect Refuge

Thermal comfort is guaranteed by redundant and sophisticated climate solutions.

The property features radiant electric heating in areas with stone floors for unmatched tactile comfort, complemented by a gas boiler with wall radiators for rapid thermal response in areas with wooden floors.

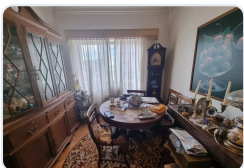
The complete air conditioning system ensures the ideal temperature throughout the year. Every detail, from the choice of insulating materials to solar orientation, has been thought out to create an atmosphere of serenity and sophistication, where luxury is felt in every touch.

This is a rare opportunity to acquire not just a property but a legacy of security and distinction in the heart of Lisbon.

An invitation to live where glamour meets peace of mind, in a residence that is, by right, a landmark in contemporary luxury architecture.

"Security is the new luxury. Exclusivity is the new freedom."

## Related Properties



Lisboa > Lisboa > São Domingos de Benfica

### **T1 apartment in São Domingos de Benfica, Lisbon**

Ref: 87014700

€279.000



Lisboa > Lisboa > Lisboa

### **LOJA Avenidas Muito Central - INVESTIMENTO**

Ref: 85966656

€290.000

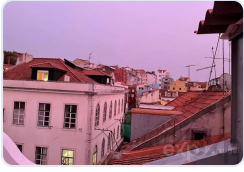


Lisboa > Lisboa > São Vicente

**Charming 1-Bedroom Furnished Apartment in Lisboa**

Ref: 86902045

€305.000



Lisboa > Lisboa > Lisboa

**Apartment with 2 bedrooms in downtown Lisbon of Lisbon**

Ref: 85507002

€340.000

---

**Real Estate Solutions**

This brochure was prepared by RealKasa® for property presentation.

**Phone:** +351 914064060

**Email:** info@realkasa.pt

<https://test.realkasa.pt/en/listings/86892654>