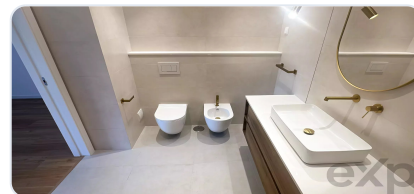


At RealKasa®, our market strategy is focused on discretion, premium presentation, and highly qualified buyer matching. Each property is positioned with a tailored narrative to maximize perceived value and market response.

Modern Apartment in Alcabideche: Comfort and Technology

Ref: 86651580 | Lisboa > Cascais > Cascais



€630.000

Business type	Sale	Property type	Apartment
Bedrooms	2	Bathrooms	1
Area	84,89 m2		

Description

This elegant apartment located in Alcabideche offers an area of 84.89 m², with two spacious bedrooms and three cozy rooms. The property is integrated with contemporary technologies, including home automation and fiber optic internet, ensuring a practical and modern living space.

Equipped with an air conditioning system and central vacuum, the apartment provides an environment that is always fresh and clean. The double-glazed PVC windows help to maintain a pleasant internal temperature and reduce external noise. The use of solar panels reflects the commitment to sustainability, ensuring energy efficiency.

With accessibility for the disabled and security reinforced by an armored door, electric gate and video surveillance, the property also offers TV distribution, electric awnings and exterior lighting. All this makes this apartment an excellent choice for those looking for comfort and security.

Related Properties

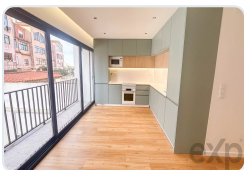


Lisboa > Cascais > Cascais

Beautifully renovated apartment in Arcadas do Estoril with sea view

Ref: 86755453

€550.000

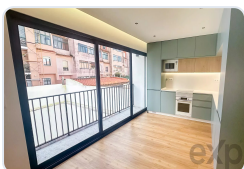


Lisboa > Cascais > Cascais

Modern Apartment with Comfort in Alcabideche

Ref: 86651449

€599.000

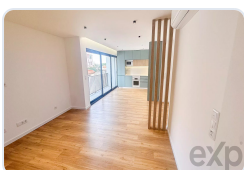


Lisboa > Cascais > Cascais

Modern 2-bedroom apartment in Alcabideche

Ref: 86651620

€660.000



Lisboa > Cascais > Cascais

Modern and comfortable apartment in Alcabideche

Ref: 86651639

€660.000

Real Estate Solutions

This brochure was prepared by RealKasa® for property presentation.

Phone: +351 914064060

Email: info@realkasa.pt

<https://test.realkasa.pt/en/listings/86651580>