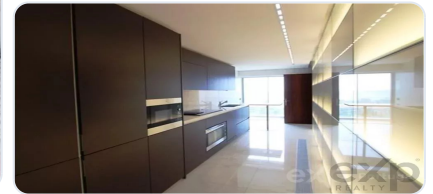


At RealKasa®, our market strategy is focused on discretion, premium presentation, and highly qualified buyer matching. Each property is positioned with a tailored narrative to maximize perceived value and market response.

Fantastic 4-bedroom apartment in the Sky Restelo building

Ref: 85948290 | Lisboa > Lisboa > Lisboa



€2.200.000

Business type	Sale	Property type	Apartment
Bedrooms	4	Bathrooms	-
Area	278,6 m2		

Description

This luxury 4-bedroom apartment located in the Sky Restelo building offers stunning views over the city, the Tagus river and the Monsanto mountain range. The building was constructed with high-quality materials, carefully chosen to ensure a sophisticated and elegant aesthetic, and has several communal areas equipped with a bar, Roman sauna, condominium room, gym and changing rooms, and a panoramic rooftop with swimming pools. The apartment has four spacious bedrooms, including two suites, with premium finishes in all areas, from the kitchen, living room, bedrooms, bathrooms, to the communal areas of the condominium. The generously-sized kitchen is equipped with AEG appliances, luxury furniture from the Italian factory Boffi, and high-quality finishes in floors, walls, ceilings, furniture, lighting and paintings. The living room is equally spacious, with premium finishes on doors, floors, ceilings, glass, wood, lighting and paint, providing a peaceful and relaxing environment to enjoy with friends and family.

The Sky Restelo condominium also has state-of-the-art home automation technology, including electrical, data, telephone, sound, alarm, heating and cooling systems, to ensure a comfortable and safe environment. In addition, the common areas, such as the bar, sauna, gym, changing rooms, rooftop and swimming pools, condo lounge and access spaces, are equipped with premium finishes and regularly maintained to ensure maximum safety and hygiene.

The location of the condominium is privileged, with panoramic views over the city and the Tagus River, and unique surroundings that include easy road access, schools, universities, parks, a leading hospital and large commercial areas. Investing in this luxury apartment in Sky Restelo is an opportunity to enjoy maximum comfort, well-being and quality of life in the heart of the city, but away from its hustle and bustle.

Related Properties



Lisboa > Lisboa > Lisboa

T1 apartment in São Domingos de Benfica, Lisbon

Ref: 87014700

€279.000



Lisboa > Lisboa > Lisboa

LOJA Avenidas Muito Central - INVESTIMENTO

Ref: 85966656

€290.000

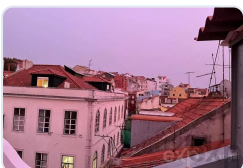


Lisboa > Lisboa > Lisboa

Charming 1-Bedroom Furnished Apartment in Lisboa

Ref: 86902045

€305.000



Lisboa > Lisboa > Lisboa

Furnished 2-bedroom apartment in downtown Lisbon

Ref: 85507002

€358.000

Real Estate Solutions

This brochure was prepared by RealKasa® for property presentation.

Phone: +351 914064060

Email: info@realkasa.pt

<https://test.realkasa.pt/en/listings/85948290>