

At RealKasa®, our market strategy is focused on discretion, premium presentation, and highly qualified buyer matching. Each property is positioned with a tailored narrative to maximize perceived value and market response.

## Rustic Land in Santa Bárbara de Nexe

Ref: 8005-517 | Faro > Faro > Faro



**€36.000**

<b>Business type</b>	Sale	<b>Property type</b>	Land
<b>Bedrooms</b>	-	<b>Bathrooms</b>	-
<b>Area</b>	1.760 m2		

## Description

Unique Opportunity in Santa Bárbara de Nexe

We present this magnificent 1,760 m<sup>2</sup> rustic plot of land, located in the picturesque town of Ladeira, Santa Bárbara de Nexe.

With access via a paved road to the entrance, gentle terrain, and nearby electricity, it offers all the conditions for a dream project.

Its panoramic mountain views provide a setting of tranquility and natural beauty, just minutes from Cerro de Guilhim. The strategic location offers easy access to the A22 highway, Faro Airport, Estoi, Loulé, São Brás, and the stunning Algarve beaches.

This is the perfect place for those looking to invest in a space with great potential, whether to develop a unique project or simply enjoy the serenity of the Algarve.

Contact us for more information.

Don't miss this opportunity and schedule your visit.

## Related Properties

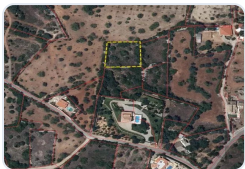


Faro > Faro > Faro

**Unique Investment Opportunity: New Development in Faro, Algarve - Don't miss out!**

Ref: 85506940

under request



Faro > Faro > Faro

**1560 m<sup>2</sup> Non-Constructible Land in Santa Bárbara de Nexe**

Ref: 86947956

€10.000



Faro > Faro > Faro

**Rustic land in Amendoeira - Estoi**

Ref: 86652692

€33.500



Faro > Faro > Faro

**Rustic Land in Mar e Guerra**

Ref: 87032942

€70.000

---

**Real Estate Solutions**

This brochure was prepared by RealKasa® for property presentation.

**Phone:** +351 914064060

**Email:** info@realkasa.pt

<https://test.realkasa.pt/en/listings/8005-517>